

eMedCheck

Installation guide for eMedCheck for Palm PDA

April 18, 2008

Institute for Systems Research

University of Maryland

Cooperative Agreement Number U50/CCU302718 from the CDC to NACCHO supported this publication. Its contents are solely the responsibility of the University of Maryland and the Advanced Practice Center for Public Health Emergency Preparedness and Response of Montgomery County, Maryland, and do not necessarily represent the official views of CDC or NACCHO.

© Copyright 2008 University of Maryland and Montgomery County APC. All rights reserved.

Installation guide for eMedCheck for Palm PDA

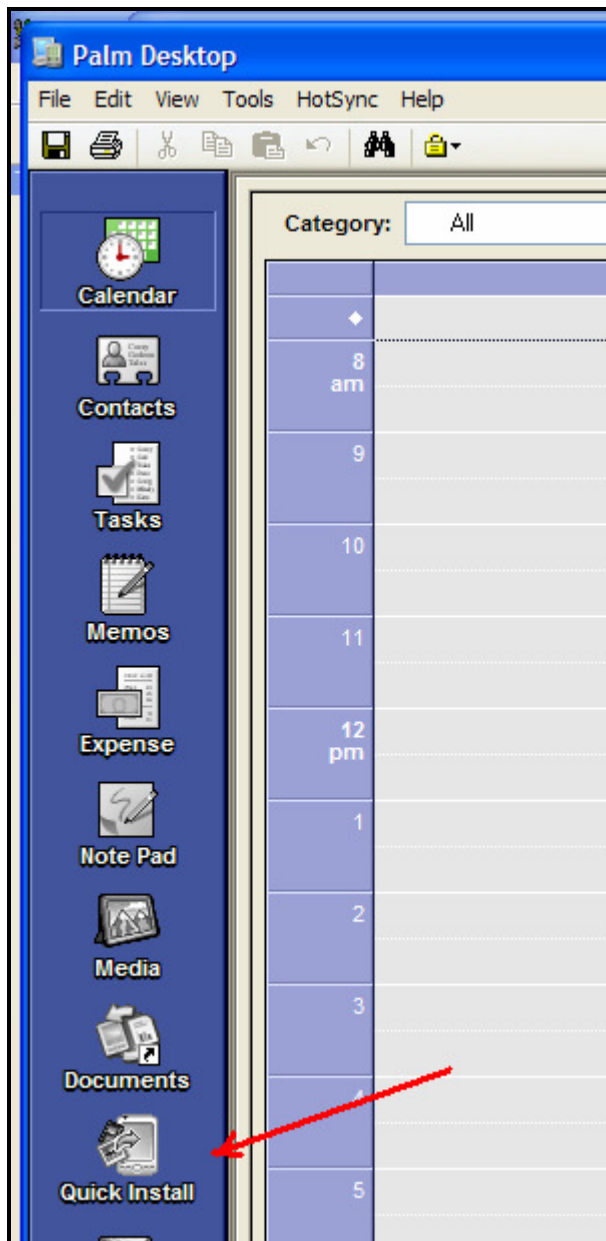
1) Install Palm Software

- To install Palm Desktop Software, insert the CD into your computer's CD drive.
- Follow the installation instructions that appear on the screen.

Tip: During the installation process, you can select to synchronize with Outlook.

2) Open Palm Quick Install

- Open Palm Desktop software on your computer.
- Open Quick Install from the tabs on the left.



3) Transfer eMedCheck to Quick Install

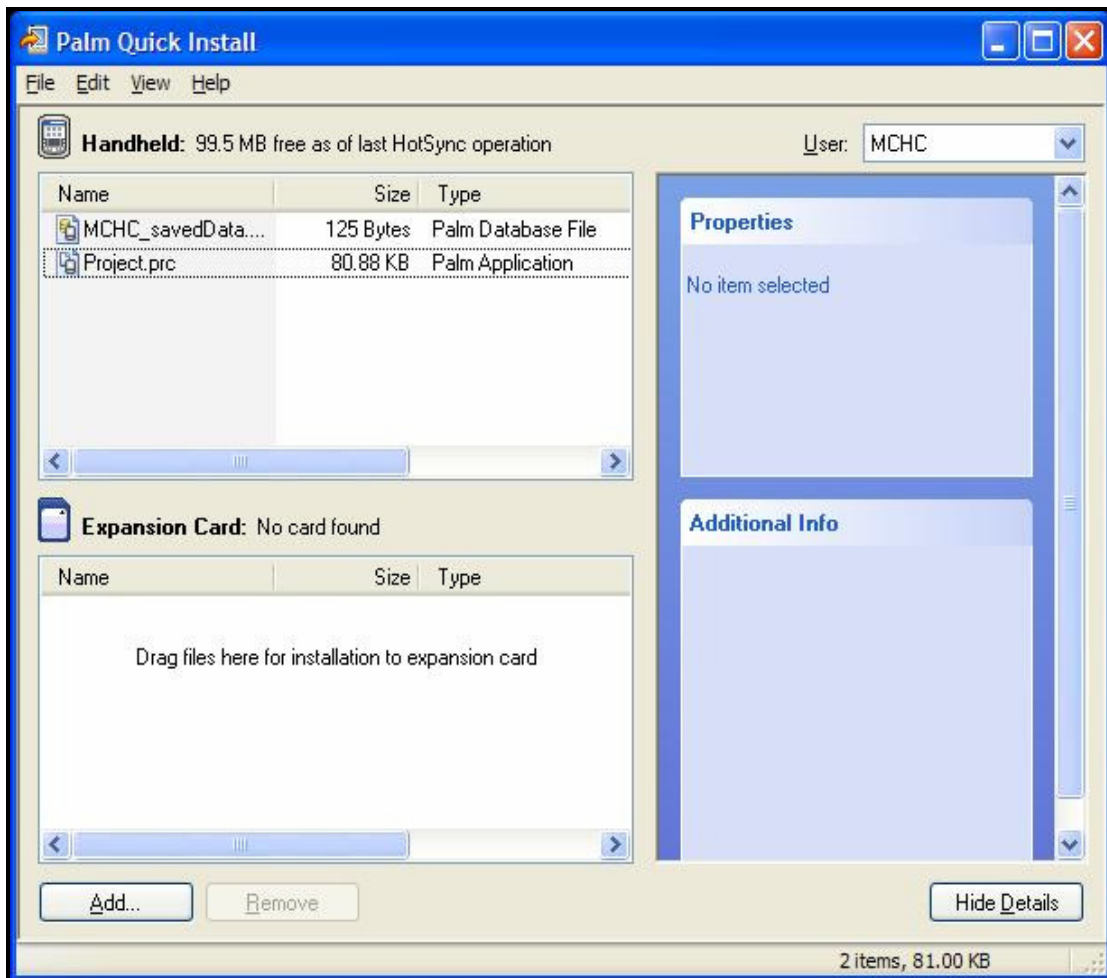
- Download the eMedCheck application file and the the eMedCheck database file to your computer.

- Open the Hotsync Manager from the Palm Software pack.

- You can conveniently install the Medical Screening application on the Palm in any of the following ways:

- Drag and drop the Palm Application File (.prc) and the Palm Database File (.pdb) into the Palm Quick Install icon.
- Open the Palm Quick Install window and drag and drop the two files, or click the Add button to select files.
- Select the two files, right-click, select Send To, and then click Palm Quick Install.

- The application file and the database file should appear in the Quick install window as shown:



4) Transfer eMedCheck to the Palm PDA

- Connect the USB/Hotsync cable to the PDA and the USB drive of your computer.
- Click on the Hotsync button on the cradle.



- Wait for Quick Install to completely transfer the software to the Palm.
- If the synchronization is successful, this should result in an application called “eMedCheck” to appear on the applications folder of your Palm PDA.
Else re-try installing the software by starting from Step 3 again.

Additional Information

This software is available via the project web site at
<http://www.isr.umd.edu/Labs/CIM/projects/clinic/>.

If you have questions or suggestions, please contact Jeffrey Herrmann at the following address:

Jeffrey W. Herrmann, Associate Professor
Department of Mechanical Engineering and
Institute for Systems Research
University of Maryland
College Park, MD 20742

Phone: 301-405-5433

Email: jwh2@umd.edu